

TSD-2220

21.5" HD Touch Screen Display

- > High-Definition 21.5" widescreen touch display
- > Full HD 1920 x 1080 display resolution
- > Built-in 4K UHD downscaling
- > HDCP 2.2 compliant
- > Multi-touch capacitive touch screen
- > Ultra wide 178 degree viewing angles
- > Built-in stereo speakers
- > Slim, rugged design
- > IP65 dust proof and water resistant
- > Rear connector cover
- > VESA 100x100 or 200x100 mountable
- > CEC controllable power, volume, and brightness
- > Designed for use with a DGE-100 or DM-DGE-200-C Digital Graphics Engine
- > 100-240V universal power pack included
- > Third-party flush wall mount kit available

The TSD-2220 is a 21.5" (546 mm) Full HD capacitive touch screen display that can be used with the Crestron® DGE-100 or DM-DGE-200-C digital graphic engines (both sold separately) to provide a powerful touch screen control solution. It supports input resolutions up to 4K60 UHD (3840x2160@60Hz) via a single HDMI® input. It can be installed using a variety of VESA compliant mounting accessories, including wall-mount brackets, desk stands, and articulating arms. The TSD-2220 is compatible with VESA 100 x 100 mm and VESA 200 x 100 mm mounts (not included).

A flush in-wall mounting solution is available from third-party supplier Wall-Smart™ (www.wall-smart.com).

SPECIFICATIONS

Touch Screen Display

Display Type: TFT active matrix color LCD
Size: 21.5 inch (546 mm) diagonal
Aspect Ratio: 16:9 Full HD
Resolution: 1920 x 1080 pixels
Brightness: 225 nits (cd/m²)
Contrast: 1000:1
Response Time: 14 ms
Color Depth: 24-bit, 16.7M colors
Illumination: WLED backlit
Viewing Angle: ±89° horizontal, ±89° vertical
Touch Screen: Projected capacitive, 10-point multi-touch capable

Buttons & Indicators

Power/Menu (rear): (5) Pushbuttons for power and setup



Power (rear behind cover): (1) LED, indicates operating power supplied via the power pack

Note: If power is lost while the TSD-2220 is powered on, it will automatically return to the powered on state when power is restored.

Communications

USB: USB Human Interface Device (USB HID)

Video

Input Signal Types: HDMI
Input Resolutions: 3840x2160@60Hz maximum

Refer to DGE-100 or DM-DGE-200-C specifications for additional information.

Audio

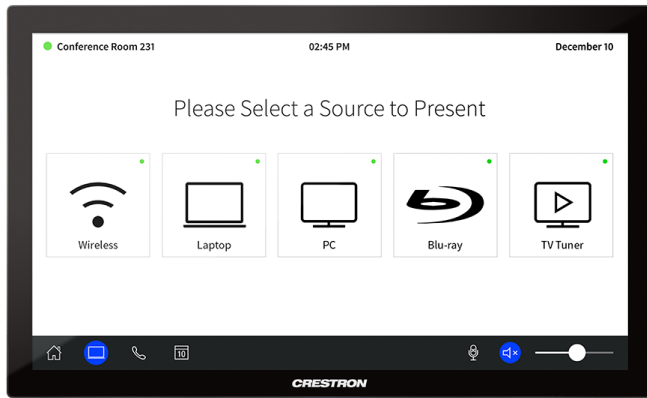
Input Signal Types: HDMI
Speakers: Built-in rear-facing stereo amplified speakers

Refer to DGE-100 or DM-DGE-200-C specifications for additional information.

Connectors

HDMI: (1) 19-pin Type A HDMI female;
HDMI digital video/audio input;
(DVI compatible ^[1])

TSD-2220 21.5" HD Touch Screen Display



TSD-2220-B — Front, Right Side, and Rear Views

USB: (1) USB type B, female;
USB device port;
6 ft (1.83 m) cable included

12VDC: (1) DC power connector;
12 Volt DC power input, power pack included

Power

Power Pack (included): Output: 4.16 Amp @ 12 Volts DC
Input: 100-240 Volts AC, 50/60 Hz

Power Consumption: 27 Watts typical;
2 Watts standby (display backlight off)

Environmental

Temperature: 32° to 104° F (0° to 40° C)
Humidity: 20% to 80% RH (non-condensing)
Heat Dissipation: 93 BTU/hr

Construction

Plastic case, IEC IP65 rated, VESA 100x100 or 200x100 mm mountable (M4 screw size), third-party flush wall mount kit available from Wall-Smart (www.wall-smart.com)

Dimensions

Height: 12.34 in (314 mm)
Width: 20.37 in (518 mm)
Depth: 1.82 in (46 mm)

Weight

9.7 lb (4.4 kg)

MODELS & ACCESSORIES

Available Models

TSD-2220-B: 21.5" HD Touch Screen Display, Black

Available Accessories

DGE-100: Digital Graphics Engine 100

DM-DGE-200-C: Digital Graphics Engine 200 w/PinPoint™ UX & 4K DM 8G+® Input

CBL Series: Crestron® Certified Interface Cables

Notes:

1. The HDMI input requires an appropriate adapter or interface cable to accommodate a DVI signal. [CBL-HD-DVI](#) interface cables are available separately.

This product may be purchased from an authorized Crestron dealer. To find a dealer, please contact the Crestron sales representative for your area. A list of sales representatives is available online at www.crestron.com/salesreps or by calling 800-237-2041.

The specific patents that cover Crestron products are listed online at: patents.crestron.com.

Certain Crestron products contain open source software. For specific information, please visit www.crestron.com/opensource.

Crestron, the Crestron logo, and PinPoint are either trademarks or registered trademarks of Crestron Electronics, Inc. in the United States and/or other countries. HDMI is either a trademark or registered trademark of HDMI Licensing LLC in the United States and/or other countries. Other trademarks, registered trademarks, and trade names may be used in this document to refer to either the entities claiming the marks and names or their products. Crestron disclaims any proprietary interest in the marks and names of others. Crestron is not responsible for errors in typography or photography. Specifications are subject to change without notice.

©2017 Crestron Electronics, Inc.